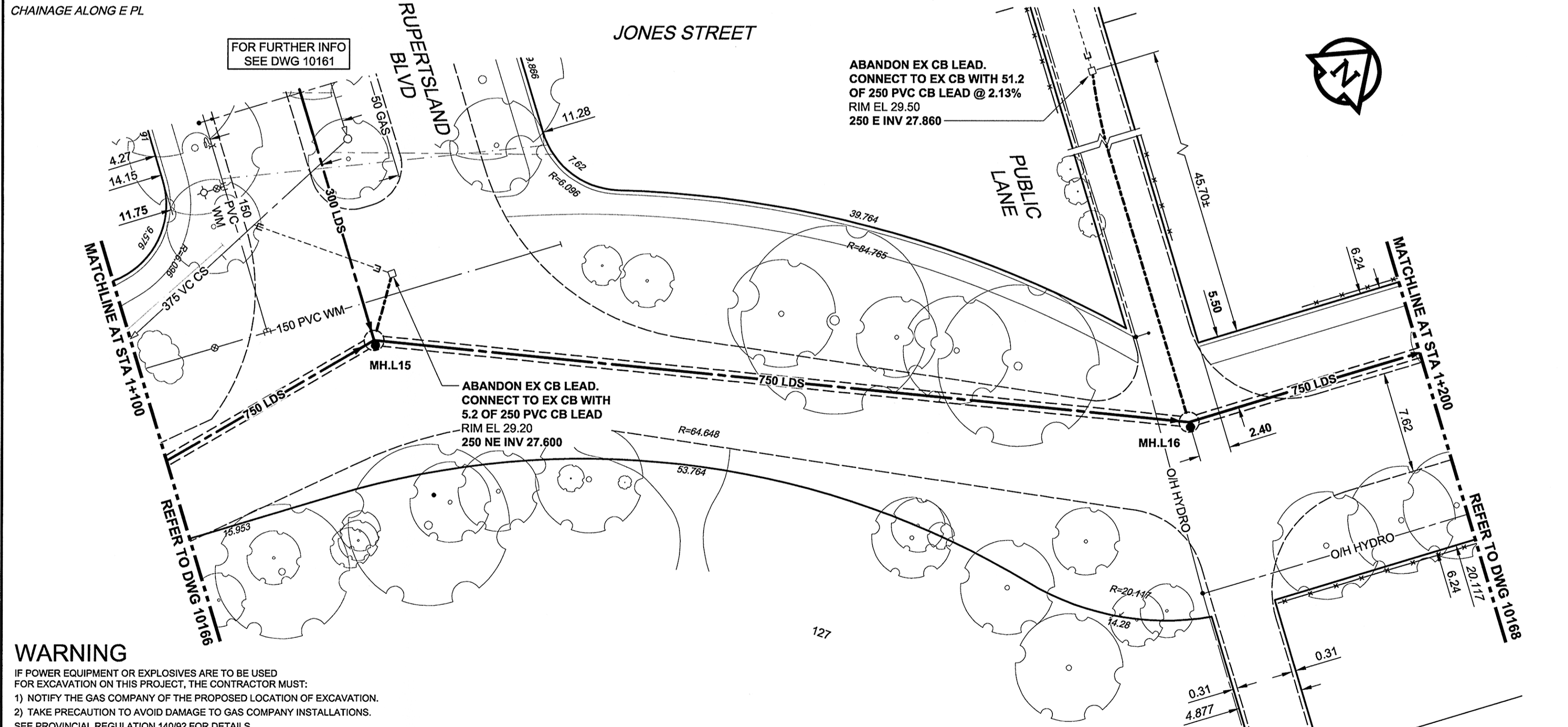
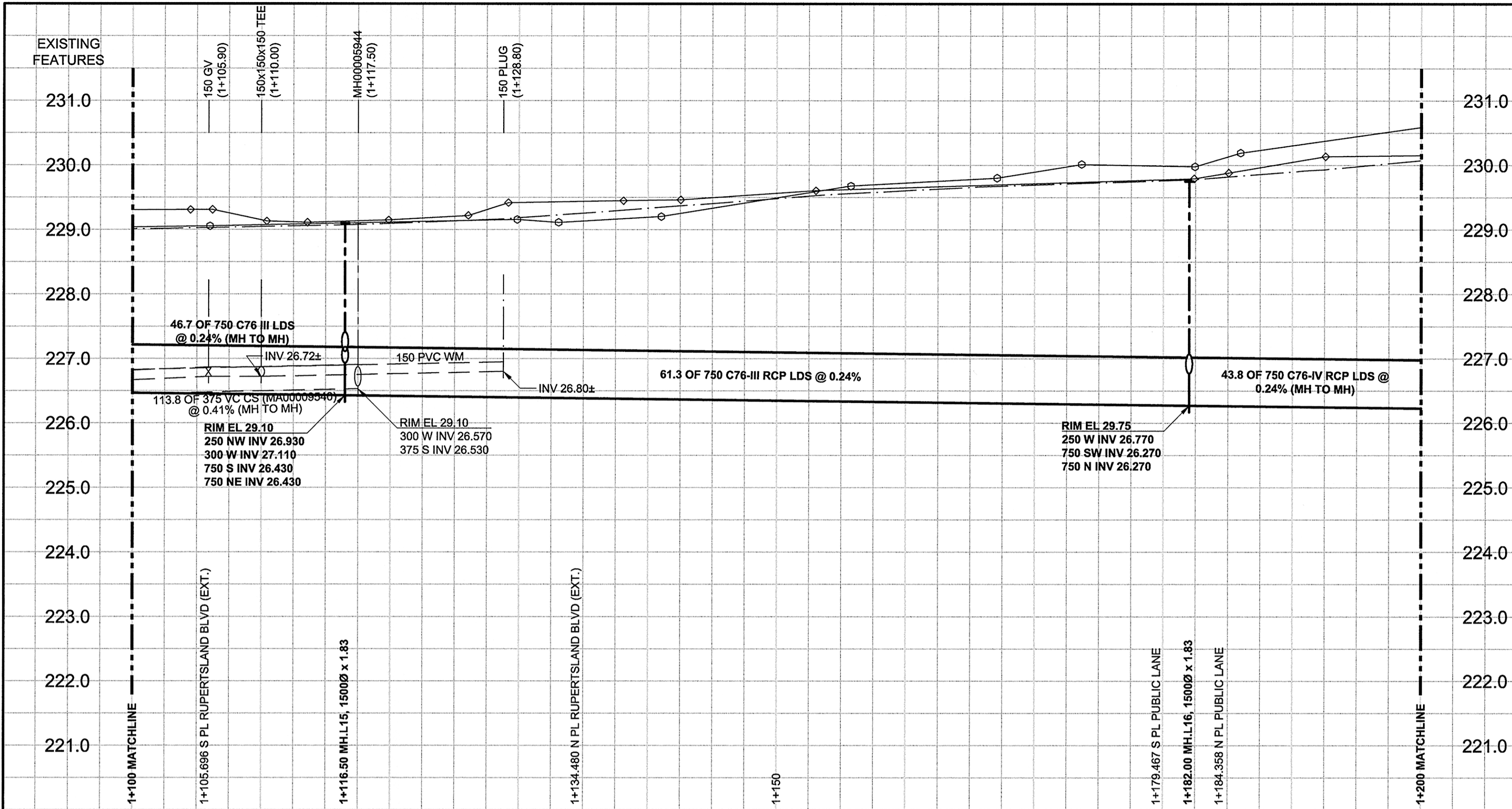


D SIZE 22" x 34" (559mm x 864mm)

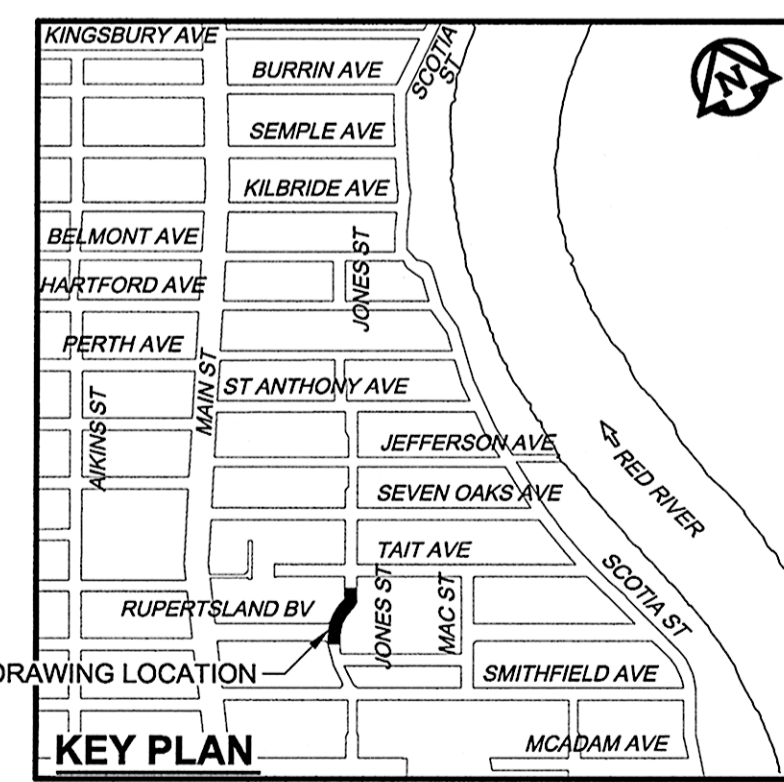
PLOT: 6/5/2012 2:50:11 PM

AECOM REVIEW DRFT CHK



**WARNING**  
 IF POWER EQUIPMENT OR EXPLOSIVES ARE TO BE USED FOR EXCAVATION ON THIS PROJECT, THE CONTRACTOR MUST:  
 1) NOTIFY THE GAS COMPANY OF THE PROPOSED LOCATION OF EXCAVATION.  
 2) TAKE PRECAUTION TO AVOID DAMAGE TO GAS COMPANY INSTALLATIONS.  
 SEE PROVINCIAL REGULATION 140/92 FOR DETAILS

- CONSTRUCTION NOTES:**
- FOR DETAILED TEST HOLE INFORMATION, SEE SPECIFICATION.
  - CONFIRM LOCATION OF ALL WATER & WASTEWATER SERVICES IN THE FIELD.
  - INSTALL NEW SEWERS, CATCHBASIN LEADS AND WATERMANS BY TRENCHLESS METHODS.
  - LOCATION OF SERVICES SHOWN ON DRAWINGS ARE APPROXIMATE.
  - ALL SHAFTS SHALL HAVE CLASS 3 BACKFILL EXCEPTING THOSE ON MAIN STREET WHICH SHALL HAVE CLASS 1 BACKFILL.



**APEGM**  
 Certificate of Authorization  
 AECOM Canada Ltd.  
 No. 4671 Date: June 5, 2012

**METRIC**  
 WHOLE NUMBERS INDICATE MILLIMETRES  
 DECIMALIZED NUMBERS INDICATE METRES

BID OPPORTUNITY NO. 430-2012

150 WM	WATERMAIN	150 WM	CURB STOP	150 WM	WATERMAIN	150 WM
○	HYDRANT	●	REDUCER	○	HYDRANT	○
○	VALVE	○	COUPLING	○	VALVE	○
○	LAND DRAINAGE SEWER	○	ANODE	○	LAND DRAINAGE SEWER	○
○	WASTE WATER SEWER	○	HYDRO	○	WASTE WATER SEWER	○
○	MANHOLE	○	MTS	○	PAVEMENT CROWN	○
○	CATCH BASIN	○	GAS	○	N/W PROPERTY LINE	○
○	CURB INLET	○	TESTHOLE	○	S/E PROPERTY LINE	○
○	CULVERT	○	LAMP STANDARD	○	N/W GUTTER	○
○	PIPE ABANDONMENTS	○	TREE	○	S/E GUTTER	○
○	SURVEY BAR	○		○		○
○	EXISTING	○	LEGEND - PLAN	○	LEGEND - PROFILE	○

**LOCATION APPROVED**  
 UNDERGROUND STRUCTURES

DATE: \_\_\_\_\_  
 SUPR. UG STRUCTURES COMMITTEE

**NOTE:**  
 LOCATION OF UNDERGROUND STRUCTURES AS SHOWN ARE BASED ON THE BEST INFORMATION AVAILABLE. BUT NO GUARANTEE IS GIVEN THAT ALL EXISTING UTILITIES ARE SHOWN OR THAT THE GIVEN LOCATIONS ARE EXACT. CONFIRMATION OF EXISTENCE AND EXACT LOCATION OF ALL SERVICES MUST BE OBTAINED FROM THE INDIVIDUAL UTILITIES BEFORE PROCEEDING WITH CONSTRUCTION.

NO.	REVISIONS	DATE	BY
0	ISSUED FOR CONSTRUCTION	12/06/06	ADL
		YYMMDD	

**AECOM**

DESIGNED BY: JEB  
 CHECKED BY: [Signature]  
 DRAWN BY: ADL  
 APPROVED BY: [Signature]  
 HOR. SCALE: 1:250  
 VERT. SCALE: 1:50  
 DATE: June 5, 2012

PROFESSIONAL'S SEAL  
 PROVINCE OF MANITOBA  
 REGISTERED PROFESSIONAL ENGINEER  
 E. J. TOUPIN  
 Member 23484  
 Date: June 5, 2012  
 CONSULTANT DRAWING NO. 60219315-SHT-30-Ph01 C-0017.dwg

**THE CITY OF WINNIPEG**  
 WATER AND WASTE DEPARTMENT

**JEFFERSON EAST**  
 COMBINED SEWER RELIEF  
 CONTRACT 1  
 JONES STREET  
 15m NORTH OF COLLEEN ROAD TO  
 20m SOUTH OF TAIT AVENUE

SHEET 17 OF 20  
 CITY DRAWING NUMBER 10167  
 REV 0